



**4-OVEN AGA
WITH ELECTRIC HOB UNIT**

*Installation
Instructions*

LEAVE WITH CUSTOMER

PLEASE READ THESE INSTRUCTIONS BEFORE INSTALLING THIS APPLIANCE

CE For use in GB and IE

04/06 EINS 511528

CONTENTS

SECTION	PAGE
INTRODUCTION	3
LOCATION	4
SPECIFICATIONS	5
INSTALLATION SEQUENCE & PROCEDURE	6

INTRODUCTION

WARNING: THIS APPLIANCE MUST BE EARTHED.

The appliance is designed for the voltage stated on the rating plate, which is situated on the base cover of the hob.

The appliance is supplied with the Hotcupboard.

Installation of the Hob must, therefore, be in conjunction with the build instructions of the 'parent' Aga.

NOTE: THE MAIN AGA COOKER IS DELIVERED EX-WORKS UNASSEMBLED.

ASSEMBLY IS UNDERTAKEN ON SITE, BY AN AUTHORISED AGA DISTRIBUTOR.




The Hob is assembled in the Hotcupboard and is supplied in a fully tested condition.

The appliance comes with a cable already attached (cable entry is optional, rear or side). If it is damaged then it should be replaced with a suitable/identical cable flexible 3 core silicone rubber with 1.5mm² tinned copper conductors (150PC) fitted by a Qualified Electrical Engineer.

WARNING: THIS APPLIANCE MUST BE EARTHED.

THIS IS A TYPE X APPLIANCE

RATING TABLE:

		<u>ELECTRIC HOB</u>	
SERIAL No.	SEE BASE OF HOB		
VOLTAGE	50 Hz 	240 V	230 V
TOTAL LOAD	kW	2.7	2.5
	AGA STATION ROAD, KETLEY, TELFORD, SHROPSHIRE, ENGLAND TF1 5AQ.		
	AE4M240198		

LOCATION

Any adjacent walls that project above the height of the hob must be of heat resistant material.

The side wall above the hob shall be greater than 60mm from the cooker.

Surfaces over the top of the cooker must not be closer than 650mm.

THE ISOLATOR SHOULD **NOT** BE POSITIONED IMMEDIATELY ABOVE BOTH THE HOB OR THE MAIN COOKER, BUT **MUST** BE SITED WITHIN 2 METRES OF THE APPLIANCE.

The hob must be wired and installed in accordance with the Current National Wiring Regulations and also any local regulations which apply.

The appliance requires a 13 amp, 230 Volt - 50Hz.

The method of connection to the mains supply should facilitate complete electrical isolation of the appliance, by the use of a fused double pole switch having a contact separator of at least 3mm serving only the appliance or a 13 amp fused plug into an unswitched socket. The point of connection should be accessible and adjacent to the appliance. The installation should be protected by a 30 mb Residual Current Circuit Breaker (RCCB).

IMPORTANT

The wires in the mains lead on this appliance are coloured in accordance with the following:-

Green/Yellow - Earth
Blue - Neutral
Brown - Live

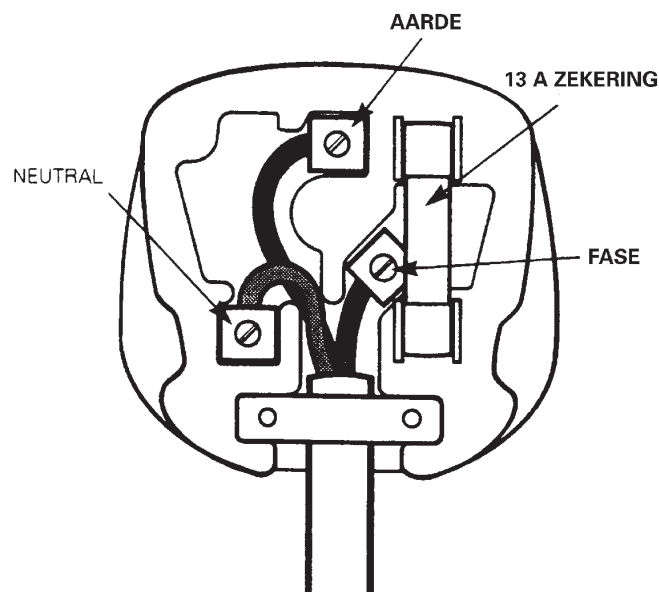
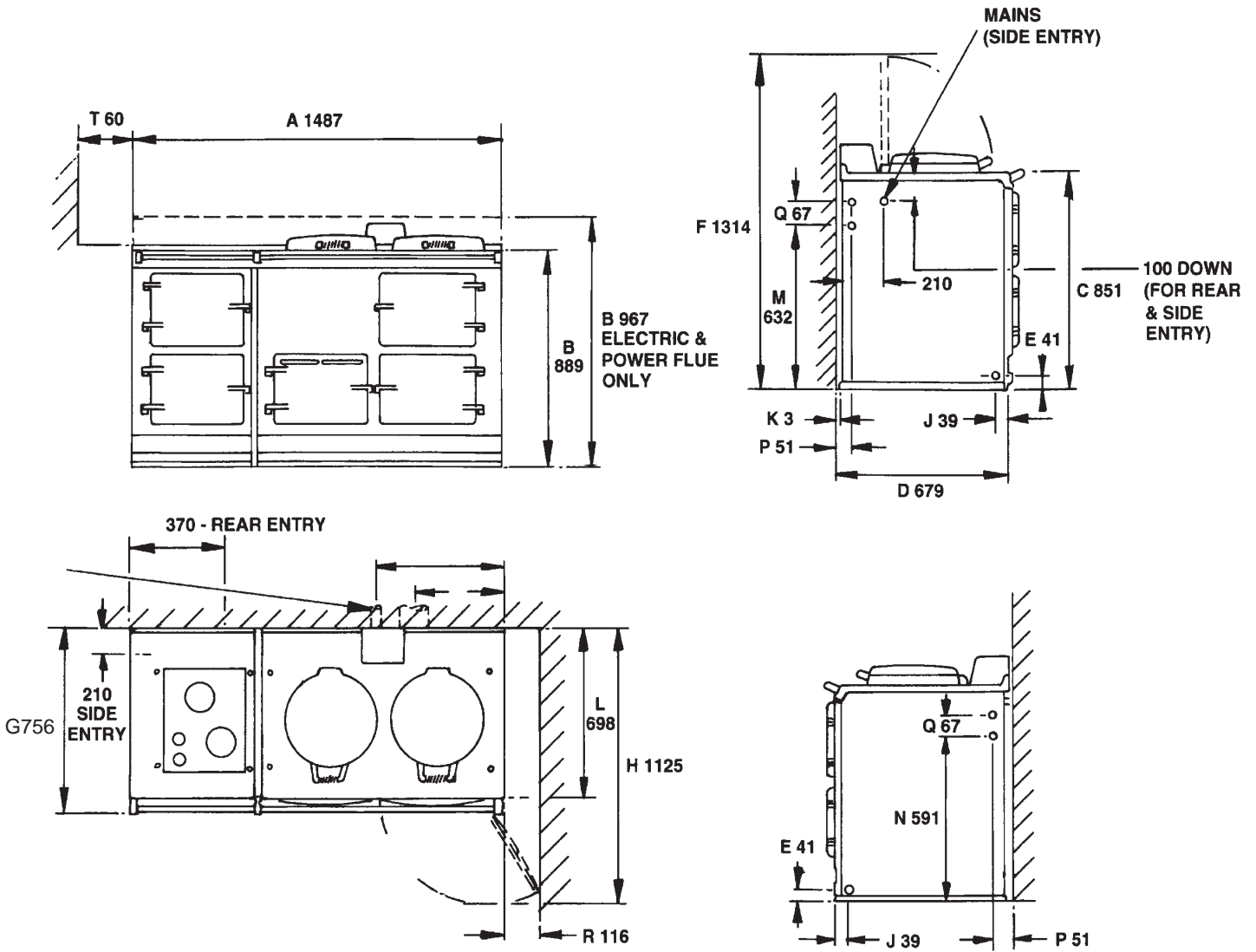


FIG. 1

DESN 511294

SPECIFICATIONS



	A	B	C	D	E	F*	G	H	J	K	L	M
mm	1598	889	851	679	60	967	1314	756	1125	116	3	698

* ELECTRIC AND GAS POWER FLUE MODELS ONLY

FIG. 2

DESN 511533

INSTALLATION SEQUENCE AND PROCEDURE

Installation must be to Local and National Wiring Regulations and carried out by a Qualified Engineer.

**For further advice or information contact
your local distributor**

With Aga's policy of continuous product improvement, the Company reserves the right to change specifications and make modifications to the appliances described and illustrated at any time.



Manufactured By
Aga
Station Road
Ketley Telford
Shropshire TF1 5AQ

www.aga-web.co.uk
www.agacookshop.co.uk
www.agalinks.com