



## Retro-Fit Kit Instruction Sheet Aga 2 & 4 Oven Conventional Flue

**NOTE! A 3 amp 230V-50Hz fused electrical supply will be required for this appliance**

### STRIP DOWN PROCEDURE

1. Isolate gas supply.
2. Remove flue safety thermostat.
3. Disconnect and remove burner assembly.
4. Remove top plate.
5. Remove insulation and vermiculite from left hand side of cooker.
6. Remove hotspot from fire barrel.
7. Remove fire barrel.
8. Remove burner chamber assembly (ashpit).
9. Remove burner housing assembly.

### RE-BUILD PROCEDURE

1. Fit new burner housing assembly. (Fig. 1). At this stage establish entry point of mains electric, ie. through side or back panel.



Fig. 1

2. When cabling route is established a 20mm diameter hole will be required through side or back panel for cable guide tube. (Fig. 2).



Fig. 2

3. Attach cable guide tube to LH side of burner housing. (Fig. 3). Cable guide tube can be cut to length to suit cable entry position.



Fig. 3

4. Refit flue safety thermostat guide tube to burner housing.

5. Refit burner chamber assembly (Fig. 4).



Fig. 4

6. Refit fire barrel and thermostat guide tube (Fig. 5). Seal with ropes and gaskets supplied.



Fig. 5

7. Refit hotspot and check levels.
8. Refill with vermiculite
9. Fit new top plate insulation blanket.
10. Refit top plate.
11. Fit new burner assembly and re-connect to gas supply.
12. Refit flue safety stat through guide tube and secure to burner housing using existing bracket. (Fig. 6).
13. Feed mains cable from 'AIMS' controller through cable guide tube and secure controls assembly to LH side of burner housing. (Fig. 7).
14. Feed 'AIMS' thermocouple and gas valve thermostat through guide tube into roasting oven. Secure to new phial support plate and fix support plate to top of roasting oven. See page 11 of installation instructions.
15. Cut grommet supplied and fit to 'half moon' notch in right hand side of controls cover. (Fig. 8).

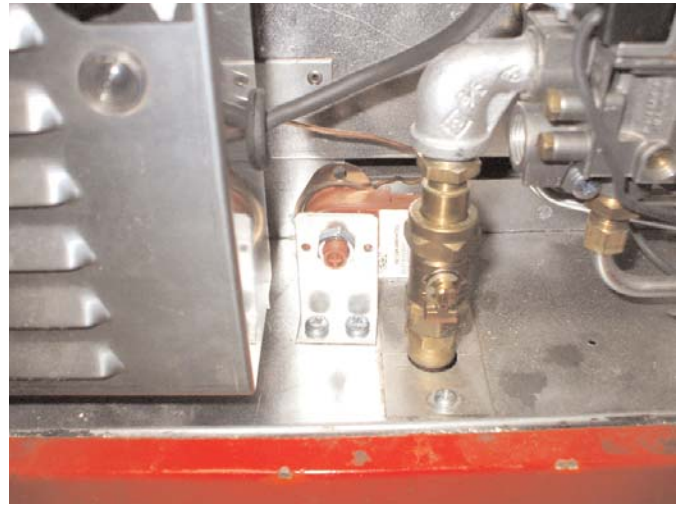


Fig. 6



Fig. 7



Fig. 8

16. Fit controls cover ensuring solenoid cable passes through 'half moon' notch in RH side of cover (Fig. 9).

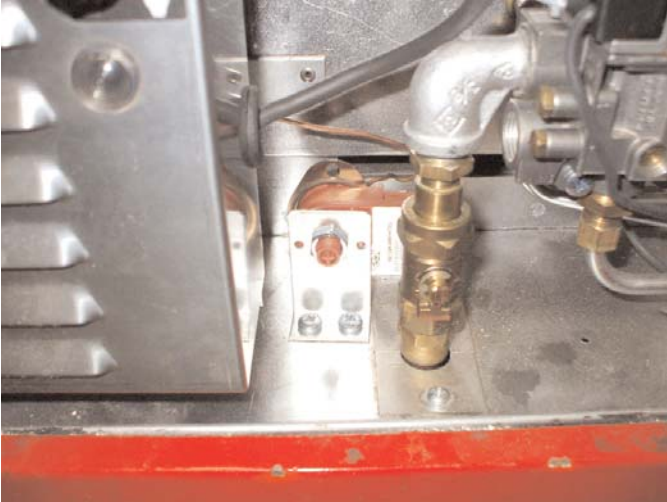


Fig. 9

17. Connect solenoid to burner assembly securing with fixing screw supplied.
18. Connect 3-pin plug to mains cable, 3 amp fuse to be fitted to plug.
19. Fit new control door lining panel (AG2M220471) complete with lighting instructions label (AG4M212085) (Fig. 10).



Fig. 9

**FOR COMMISSIONING OF BURNER AND AIMS SET-UP REFER TO INSTALLATION INSTRUCTIONS**